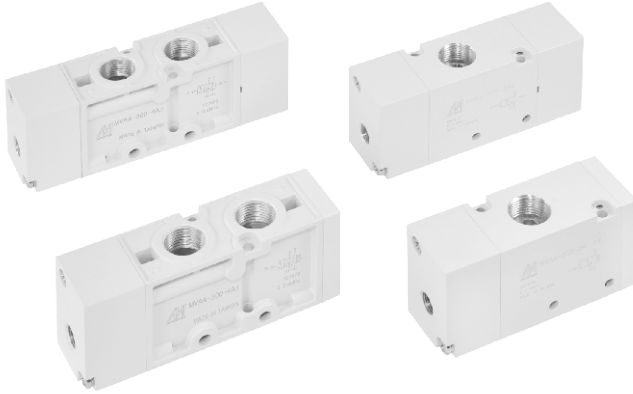


MVAA-300 系列

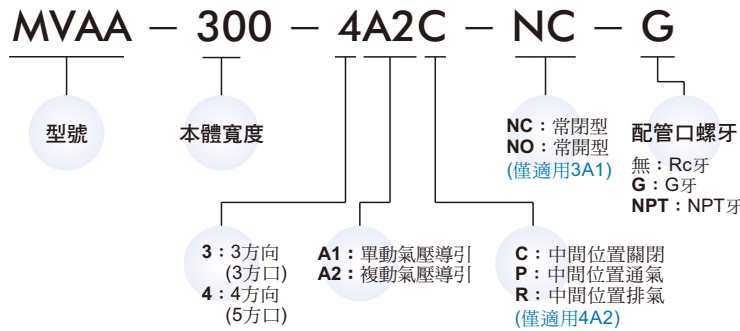
氣動閥



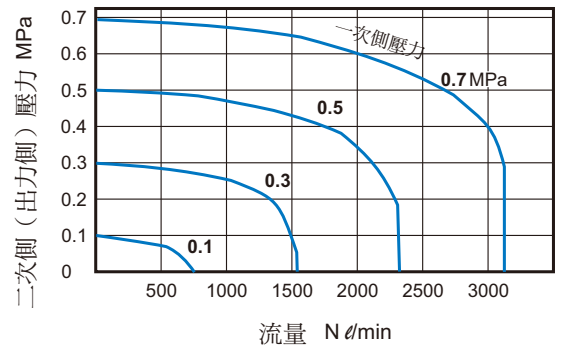
規格：

型號	3A1	3A2	4A1	4A2	4A2C.P.R
配管口徑代號	10A				
配管口徑尺寸	Rc3/8				
方口數	3口			5口	
使用流體	空氣				
使用壓力範圍	0~0.8 MPa				
耐壓力	1 MPa				
有效斷面積	35 mm ²				
導引壓力範圍	(0.34×P+0.1)~0.8 MPa P: 使用壓力				
周圍溫度	-5~+60℃ (不凍結)				
重量	295 g	324 g	236 g	301 g	501 g

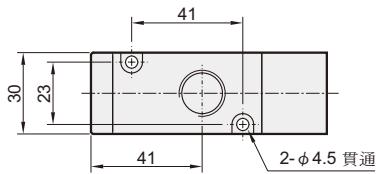
訂購代號：



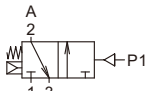
流量特性圖：



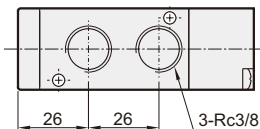
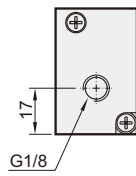
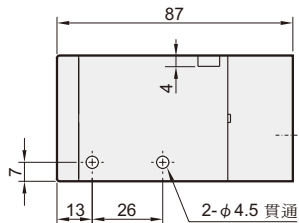
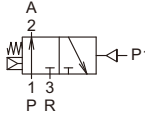
MVAA-300-3A1-NC/NO



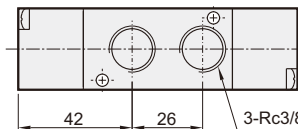
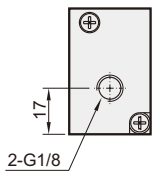
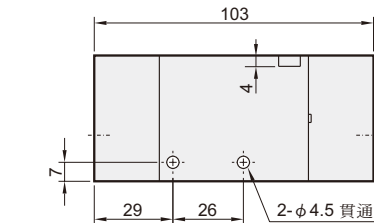
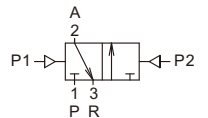
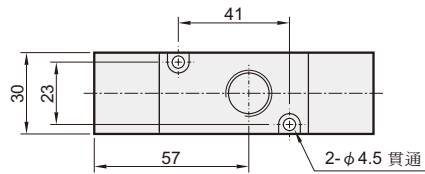
NC



NO



MVAA-300-3A2

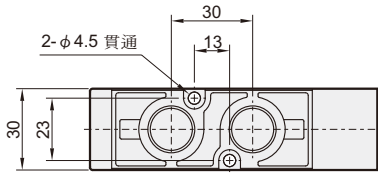
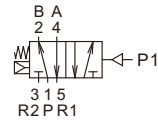


MVAA-300 外觀尺寸

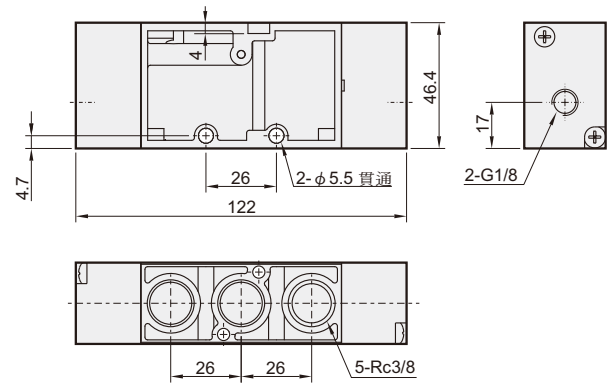
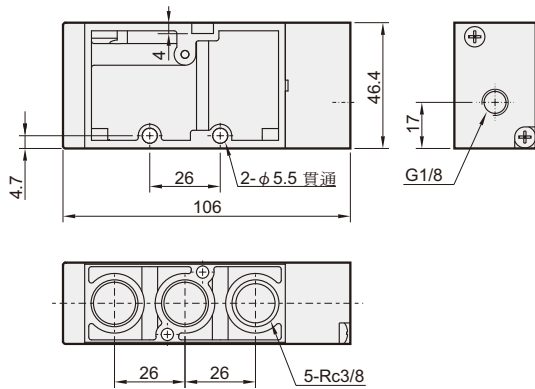
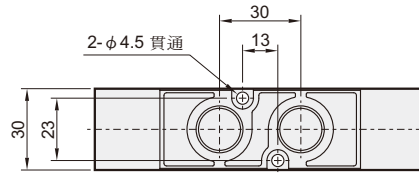
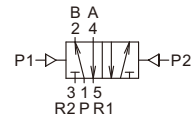
氣動閥



MVAA-300-4A1



MVAA-300-4A2



MVAA-300-4A2C.P.R

MVAA-300-4A2C

MVAA-300-4A2P

MVAA-300-4A2R

