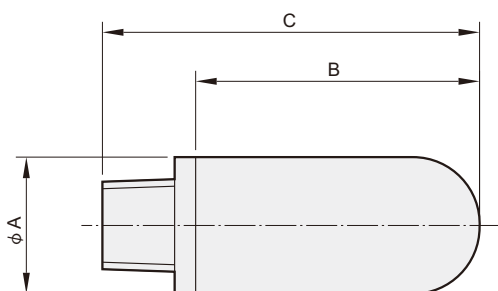
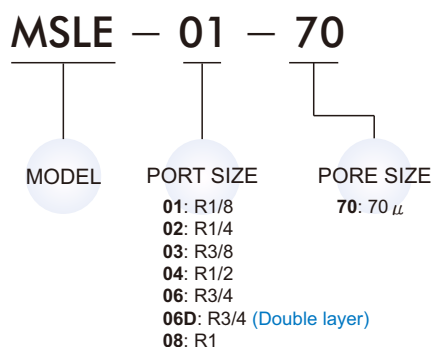




Order example



Features

- Porous polyethylene moulded body allows high flow with low noise.
- Wide range of connecting threads available to screw into exhaust port of control valve.
- High noise reduction.

■ Significant noise reduction & high air flow

With double layer design, significant noise reduction and high air flow can be achieved at the same time.

■ Easy installation

With different adapter, silencers screw directly to the exhaust port.

■ High working pressures

Working pressures up to 1 MPa.

■ Chemical resistance

High chemical resistance & Rust free.

■ Maintenance free

Oil and water are not able to affect polyethylene silencers.

Specification

Model	MSLE
Medium	Air
Operating pressure range	1 MPa
Ambient temperature	0~+60°C

Model	Code Port size	A	B	C
MSLE-01	R1/8	15.6	27.3	37.3
MSLE-02	R1/4	19	30.5	43.3
MSLE-03	R3/8	25	53	69
MSLE-04	R1/2	25	62.5	78.5
MSLE-06	R3/4	38	108.4	132.4
MSLE-06D	R3/4	50	107	127
MSLE-08	R1	50	107	139

- MSLE-04-70 means a R1/2 silencer with 70 μ porous body.
- MSLE-06D-70 means a R3/4 double layer silencer with 70 μ porous body.
- Port size out of specification is also available.